

ACT Suburban Challenge

small suburb scenario

Population 2000 people

Low density housing 25%

Hint: low density housing sits outside medium to high density housing areas.

Medium density housing 25%

Hint: keep medium density residential **near** main arterial roads and **near** shopping centres.

High density housing 50%

Hint: keep high density housing **along** main arterial roads and **close** to shopping centres.

Work out how much low, medium and high density housing is required for your suburb.

Low density

25% of 2000 = 500 people

1 house represents 50 people

total ___ houses

Medium density

25% of 2000 = 500 people

1 townhouse represents 100 people

total ___ t/houses

Hi density

50% of 2000 = 1000 people

1 apartment represents 200 people

total ___ apartments



Low density housing

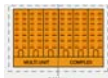
1 X house represents 50 people

fold here



Medium density housing

1 x town house represents 100 people

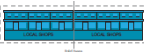


High density housing

1 apartment represents 200 people

Local shops

1x local shops for 1500 people



ACT Suburban Challenge

medium suburb scenario

Population 4000 people

Low density housing 25%

Hint: low density housing sits outside medium to high density housing areas.

Medium density housing 50%

Hint: keep medium density residential **near** main arterial roads and **near** shopping centres.

High density housing 25%

Hint: keep high density housing **along** main arterial roads and **close** to shopping centres.

Work out how much low, medium and high density housing is required for your suburb.

Low density

25% of 4000 = 1000 people

1 house represents 50 people

total ___ houses

Medium density

50% of 4000 = 1500 people

1 townhouse represents 100 people

total ___ t/houses

Hi density

25% of 4000 = 1000 people

1 apartment represents 200 people

total ___ apartments



Low density housing

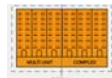
1 X house represents 50 people

fold here



Medium density housing

1 x town house represents 100 people

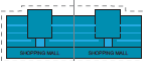


High density housing

1 apartment represents 200 people

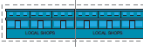
Shopping mall

1x shopping mall for 2500 people



Local shops

1x local shops for 1500 people



ACT Suburban Challenge

large suburb scenario

Population 7000 people

Low density housing 50%

Hint: low density housing sits outside medium to high density housing areas.

Medium density housing 25%

Hint: keep medium density residential **near** main arterial roads and **near** shopping centres.

High density housing 25%

Hint: keep high density housing **along** main arterial roads and **close** to shopping centres.

Work out how much low, medium and high density housing is required for your suburb.

Low density

50% of 7000 = 3500 people

1 house represents 100 people

total ___ houses

Medium density

25% of 7000 = 1750 people

1 townhouse represents 150 people

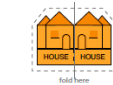
total ___ t/houses

Hi density

25% of 7000 = 1750 people

1 apartment represents 250 people

total ___ apartments



Low density housing

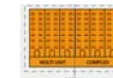
1 x house represents 100 people

fold here



Medium density housing

1 x town house represents 150 people

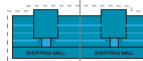


High density housing

1 apartment represents 250 people

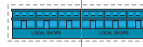
Shopping mall

1x shopping mall for 2500 people



Local shops

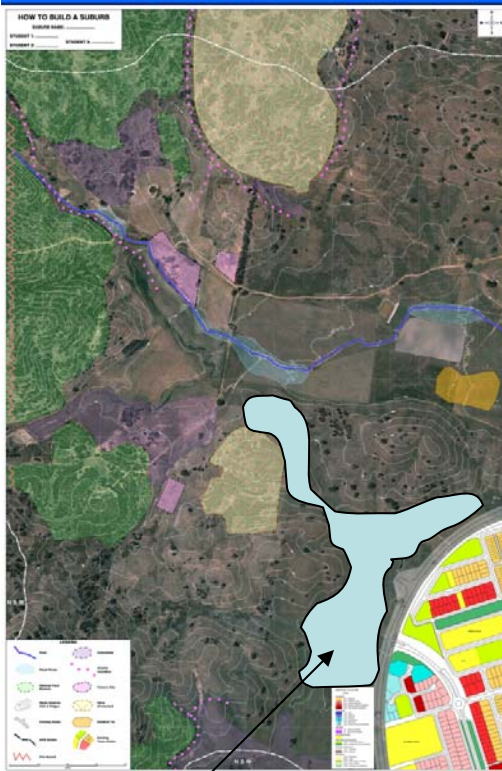
1x local shops for 1500 people



ACT Suburban Challenge

small suburb scenario

Population 2000 people



Example area

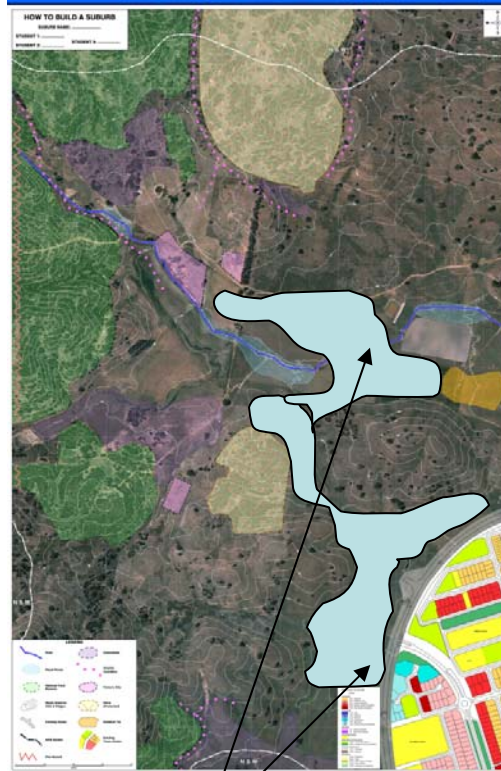


1 square block = 100 people

ACT Suburban Challenge

medium suburb scenario

Population 4000 people



Example area

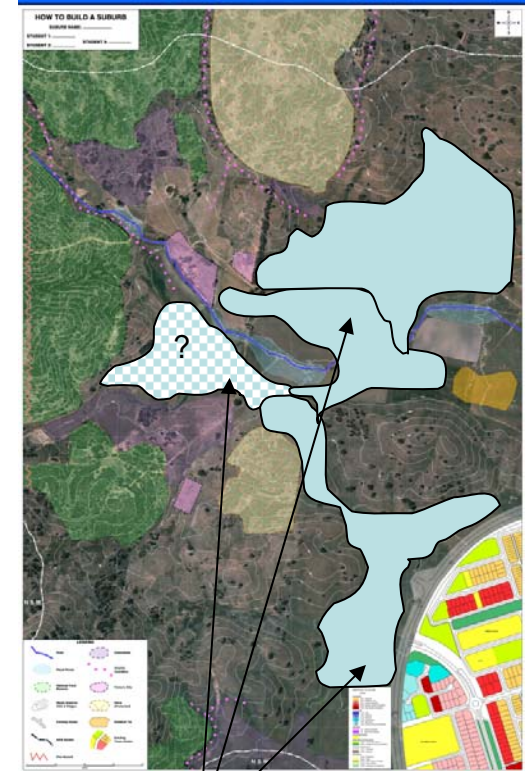


1 square block = 100 people

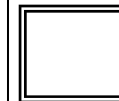
ACT Suburban Challenge

large suburb scenario

Population 7000 people



Example area



1 square block = 100 people