



Childcare Centres in the ACT - Long day care profile

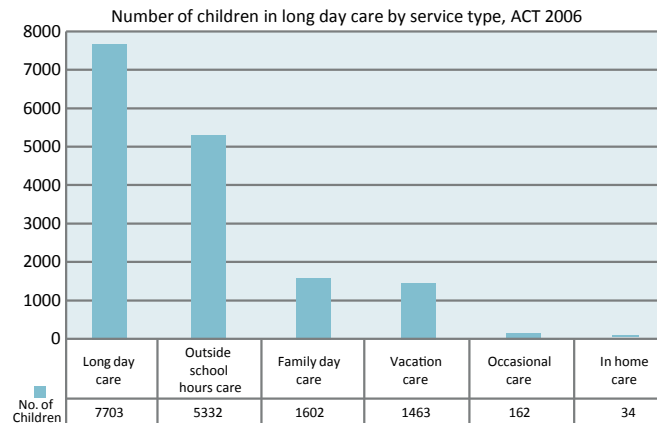
This profile is a summary of long day childcare centre trends in the ACT, and builds on data contained in the 'Childcare Centres in the ACT' (2009) paper, ACT Planning and Land Authority (now known as the Environment and Sustainable Development Directorate), ACT Government.

Long day care (LDC) centres provide regular full-time or part-time childcare and cater for children aged from birth to 5 years. Long day care centres can be located in their own grounds, attached to schools, or in shopping centres and office blocks. Centres can be workplace-based, community-based or privately run.

Number of children

In 2006, just over 16,000 ACT children between the ages of 0 – 12 years had regular childcare arrangements. Around 7,700 children usually attended long day care (LDC) and approximately 8,500 children attended other types of childcare (see Figure 1).

Figure 1: Number of children

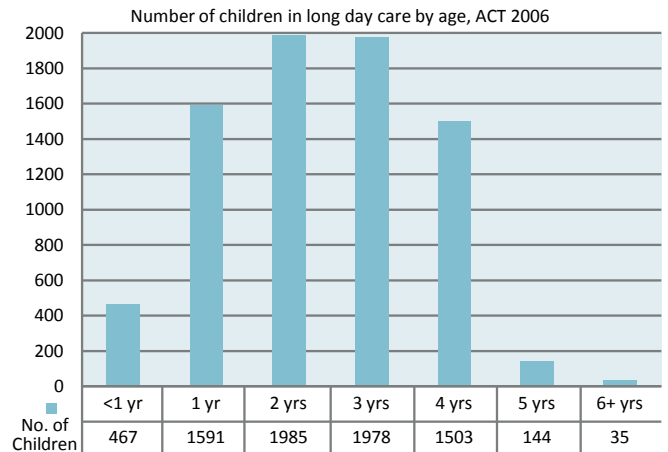


Source: 2006 Australian Government Census of Childcare Services, DEEWR 2008

Age of children

The use of LDC varies with age and is largely utilised for children aged 12 months to four years in Australia. In 2006, there were an estimated 7,700 children attending LDC in the ACT, of which, around 470 were aged less than 12 months years of age. Figure 2 shows the number of children in the ACT in LDC by age.

Figure 2: Age of children

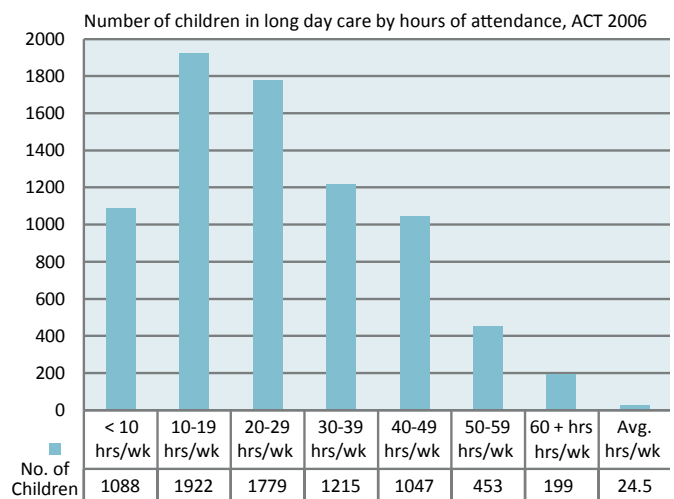


Source: 2006 Australian Government Census of Childcare Services, DEEWR 2008

Hours of attendance

In 2006, ACT children who usually attended LDC spent an average of 24.5 hours a week in childcare. Around 1,000 children spent less than 10 hours per week in LDC. A further 3,700 were in long day care for 10 to 29 hours, while approximately 2,700 spent more than 30 hours per week in LDC.

Figure 3: Hours of attendance



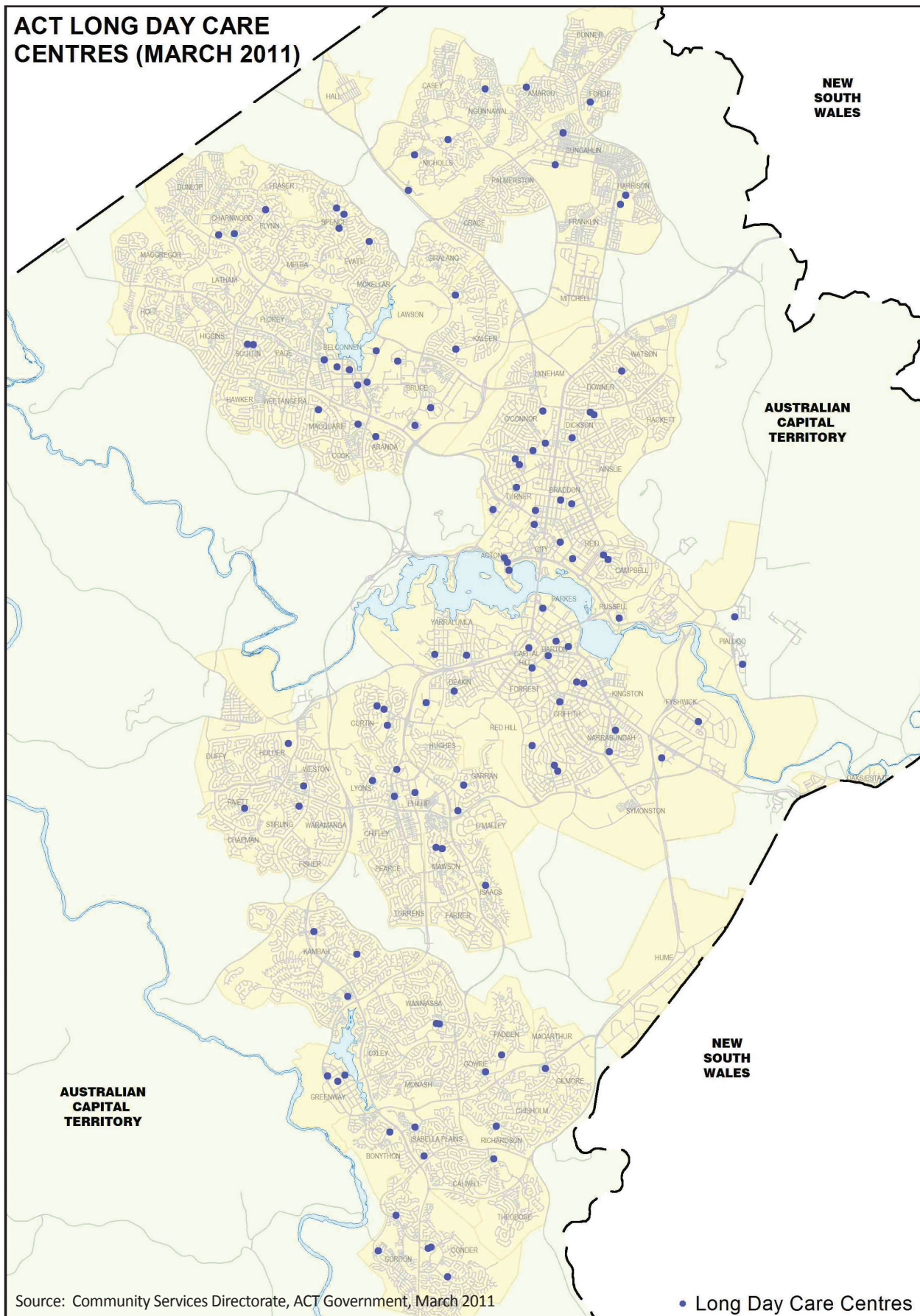
Source: 2006 Australian Government Census of Childcare Services, DEEWR 2008

Figures for 2010 indicate ACT children spent an average of 27.9 hours a week attending LDC (*Report on Government Services 2011*, Steering Committee for the Review of Government Service Provision [SCRGSP] 2011, Productivity Commission, Canberra).



Distribution of centres

Map 1: Distribution of centres



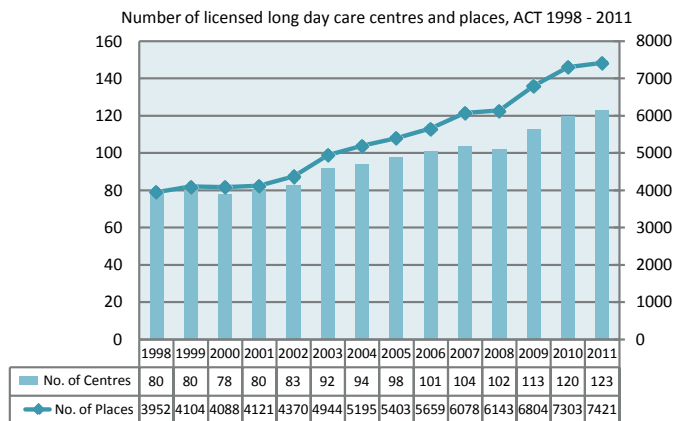
Source: Community Services Directorate, ACT Government, March 2011



Number of centres and places

There were 123 licensed LDC centres with just over 7,400 child places in the ACT in 2011. Figure 4 shows that from 2002 onwards there has been a steady increase in the number of licensed LDC centres and available child places in the ACT.

Figure 4: Long day care centres and places



Source: Community Services Directorate, ACT Government, March 2011

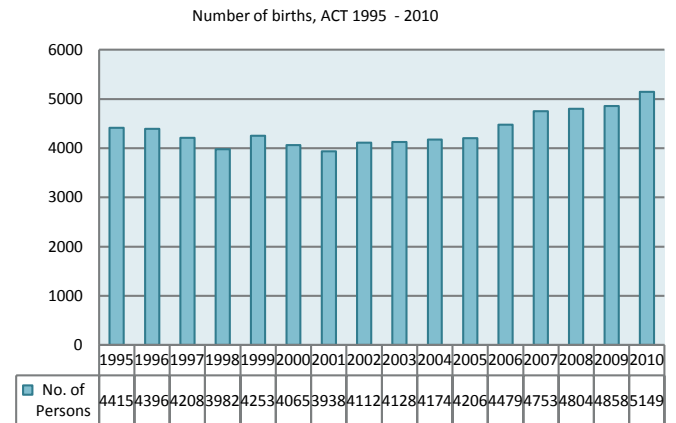
Monetary cost

In 2010, the average weekly service cost in the ACT for 50 hours of LDC was \$345, compared to \$265 in 2006, (nationally, \$285 in 2010 and \$233 in 2006) (2010 figures: *Report on Government Services 2011*, SCRGSP 2011, Productivity Commission, Canberra and 2006 figures: *2006 Australian Government Census of Childcare Services*, DEEWR, 2008).

Number of births

Figure 5 shows the number of births in the ACT reached a low in 2001 and has steadily increased since this time.

Figure 5: Number of births



Sources: 1995-2009 figures derived from Births, Australia 1995-2009, Summary, Australian Capital Territory (Table 1.8), cat. no. 3301.0, Australian Bureau of Statistics, 2009. 2010 figures derived from Births, Australia 2000-2010, Summary, Australian Capital Territory (Table 1.8), cat. no. 3301.0, Australian Bureau of Statistics, 2011

0 – 4 year old population and projections

In 2006, there were approximately 20,000 children aged 0-4 years in the ACT, the bulk of which resided in the districts of Tuggeranong, Belconnen and Gungahlin-Hall (in number order). Looking to the future, the ACT Government's current population projections (released June 2011) anticipate continuing growth in the ACT's 0-4 year old population. Table 1 shows by the year 2021, the number of 0-4 year olds in the ACT are projected to increase to 27,000 persons.

Table 1: ACT population projections, 0 –4 year olds

Year	North Canberra	Belconnen	Woden Valley	Weston Creek	Molonglo	Tuggeranong	South Canberra	Gungahlin Hall	ACT Total
2006	1995	5461	1586	1328	0	5725	929	3019	20100
2010	2450	6350	1850	1500	0	5950	1250	4200	23650
2021	3400	6650	1750	1200	1600	5250	1650	5700	27200

Population figures have been rounded to the nearest 50 persons. Due to this rounding, the sum of the figures presented in this table may not balance. Sources: 2006 figures derived from: 2006 Census of Population and Housing, Basic Community Profile Series, Australian Capital Territory (Table B04), cat. no. 2001.0, Australian Bureau of Statistics, 2006. 2010 and 2021 figures derived from: ACT Population Projections for Suburbs and Districts, 2009-2021 Projected Population by Age Cohort, ACT Chief Minister and Cabinet Directorate, ACT Government, 2011.

© Australian Capital Territory, Canberra, November 2011

Material in this publication may be reproduced as long as you attribute the authors. To attribute this work, cite Long Day Care Centres Profile, Canberra, Strategic City Planning and Design, Environment and Sustainable Development Directorate, ACT Government.

This profile builds the on data provided in the 'Childcare Centres in the ACT (2009) Update' paper and is based on information available to the Environment and Sustainable Development Directorate, ACT Government at the time of preparation. Any statement, opinion or advice expressed or implied in this report is made in good faith but on the basis that the ACT Government and its agents and employees are not liable for any damage or loss which may occur in relation to its use by the client or any third party.

Licensed long day care centres are only examined in this report; family day care, after-school care, unlicensed centres etc have not been examined.