

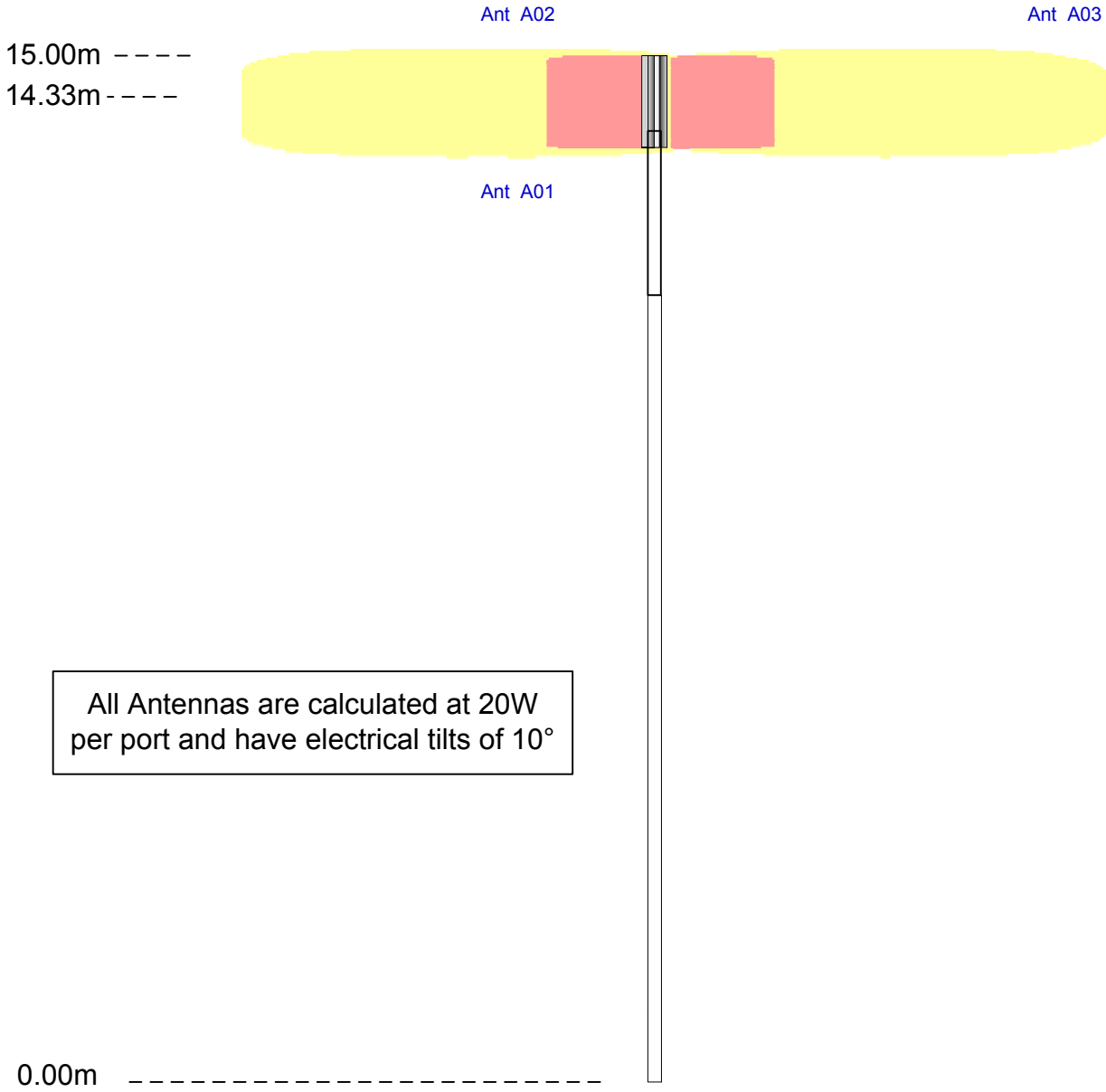
# STRUCTURE & ANTENNA DRAWING CANBERRA 3GIS EME SURVEY

S1 55° TN	Page 2
S1 135° TN	Page 3
S1 205° TN	Page 4
S1 290° TN	Page 5
S1 315° TN	Page 6
S1 14.33m	Page 7

This drawing uses the ARPANSA standard



**THIS EME DRAWING IS A GENERIC DRAWING FOR CANBERRA 3GIS LIGHT POLE STRUCTURES**

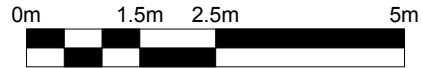


All Antennas are calculated at 20W per port and have electrical tilts of 10°

Structure 1




Scale: 1:100

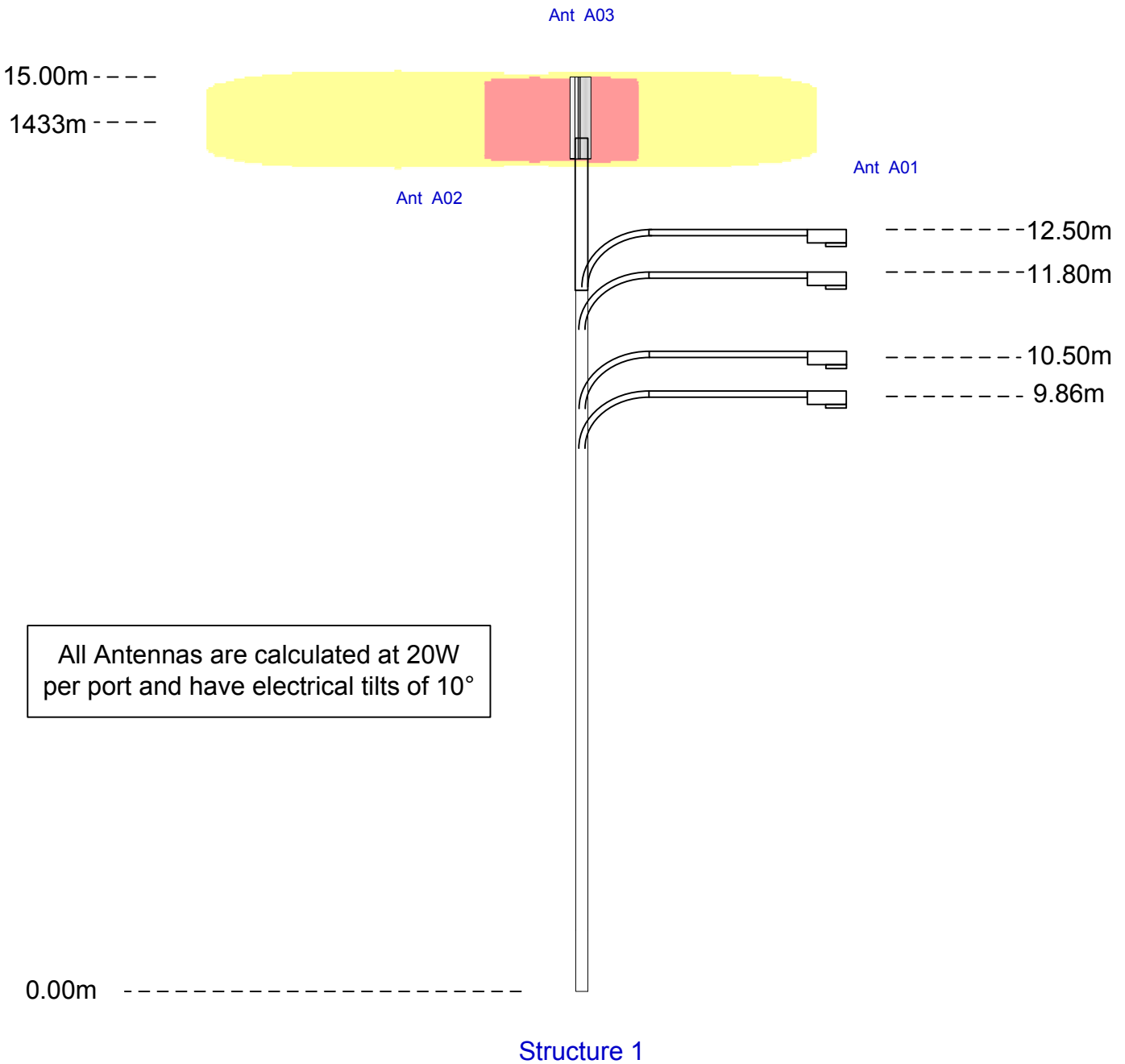


■ NO ACCESS

■ LIMITED ACCESS

Drawn	Accepted	Amendment	Date	Issue	CANBERRA 3GIS EME SURVEY
ZAAHEER KHALFAN	MARTIN CUTTER	PRELIMINARY EME FOR CANBERRA 3GIS LIGHTPOLE	25-Nov-05	1	
					S1 55° TN
					 Page 2 of 7

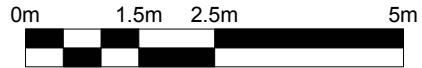
**THIS EME DRAWING IS A GENERIC DRAWING FOR CANBERRA 3GIS LIGHT POLE STRUCTURES**



All Antennas are calculated at 20W per port and have electrical tilts of 10°



Scale: 1:100



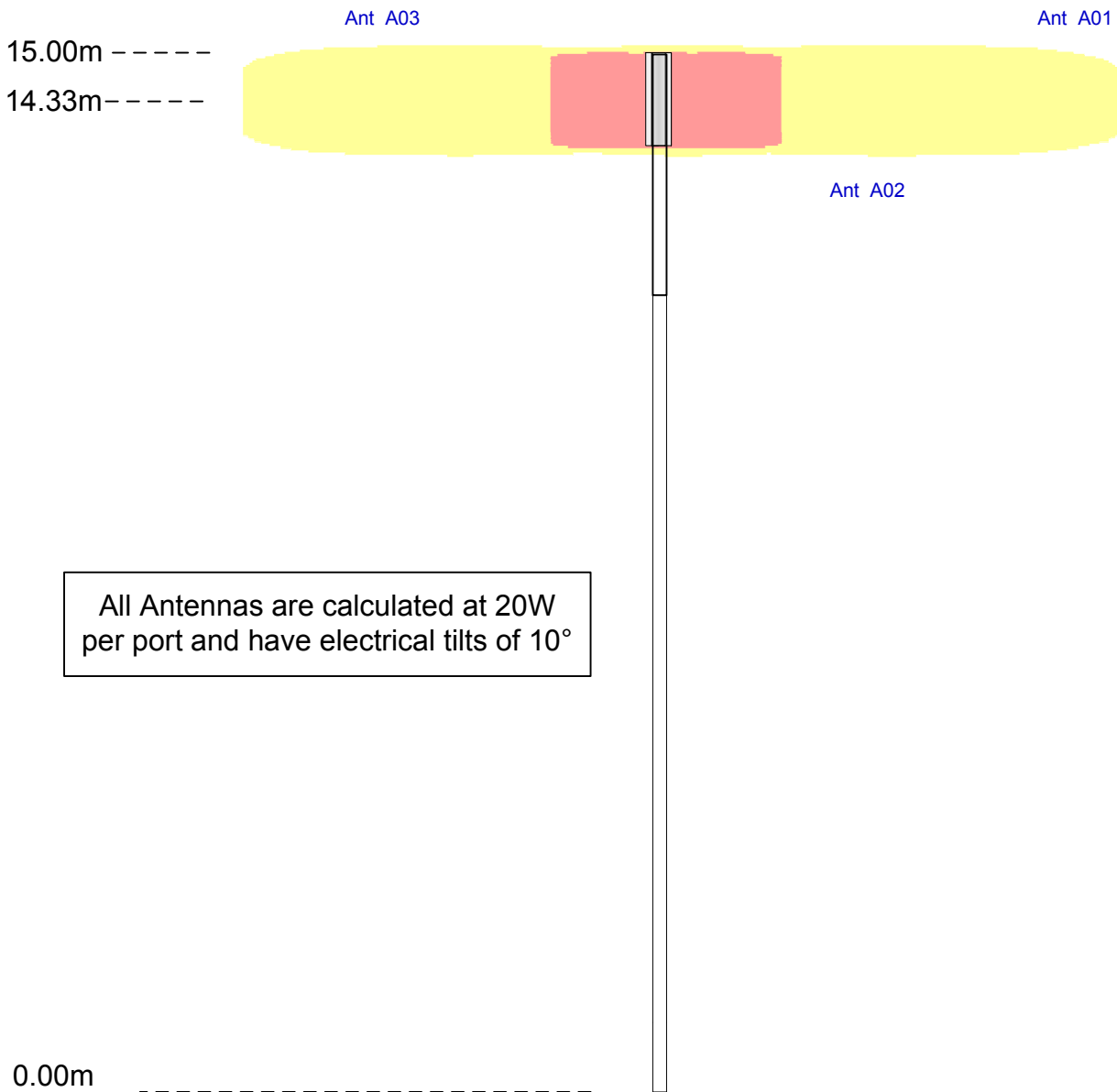
■ NO ACCESS

■ LIMITED ACCESS

Drawn	Accepted	Amendment	Date	Issue	CANBERRA 3GIS EME SURVEY
ZAAHEER KHALFAN	MARTIN CUTTER	PRELIMINARY EME FOR CANBERRA 3GIS LIGHTPOLE	25-Nov-05	1	



**THIS EME DRAWING IS A GENERIC DRAWING FOR CANBERRA 3GIS LIGHT POLE STRUCTURES**

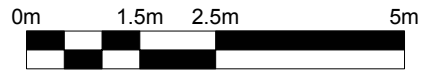


All Antennas are calculated at 20W per port and have electrical tilts of 10°

Structure 1



Scale: 1:100

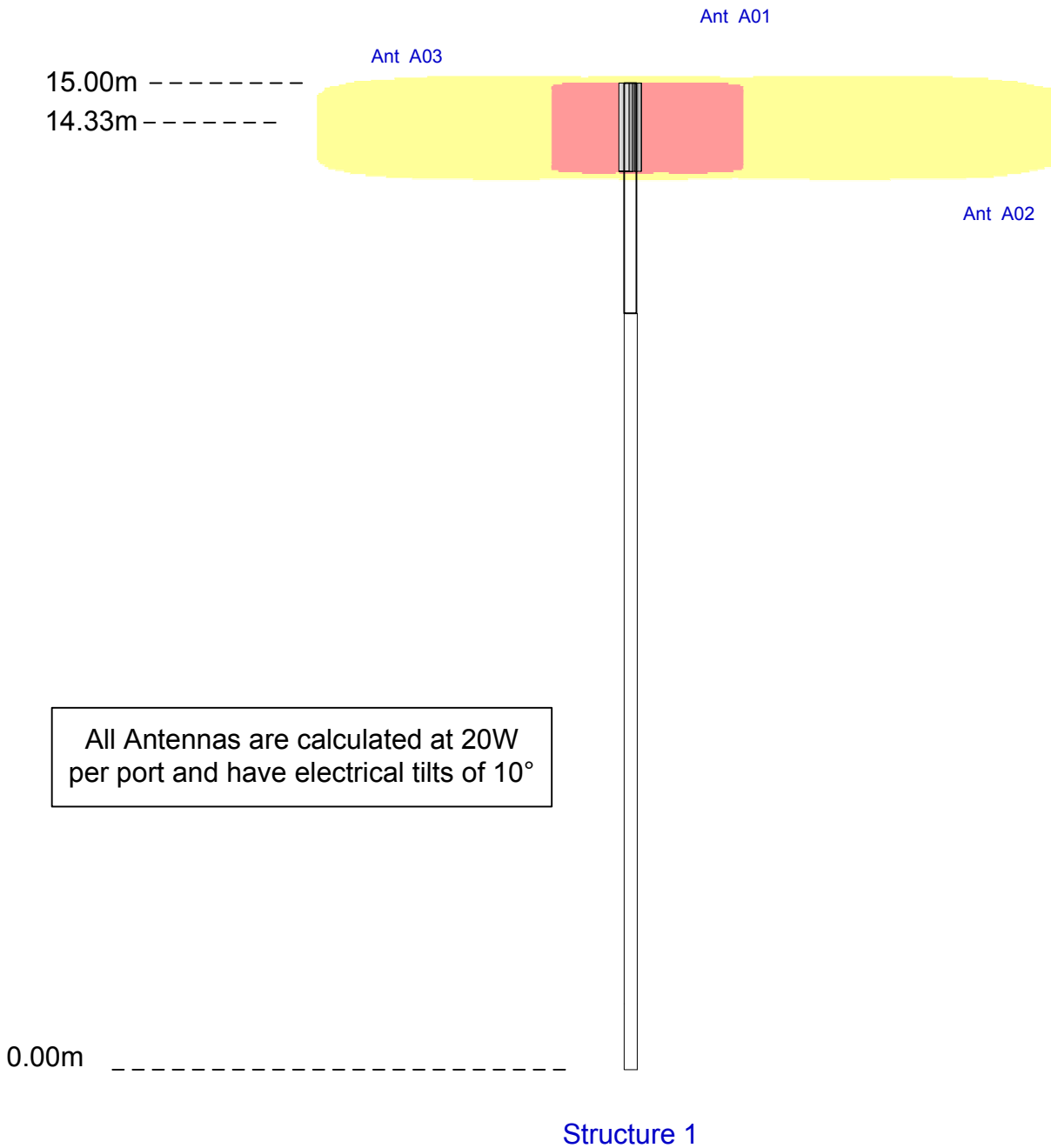


■ NO ACCESS

■ LIMITED ACCESS

Drawn	Accepted	Amendment	Date	Issue	
ZAAHEER KHALFAN	MARTIN CUTTER	PRELIMINARY EME FOR CANBERRA 3GIS LIGHTPOLE	25-Nov-05	1	CANBERRA 3GIS EME SURVEY
					S1 205° TN

**THIS EME DRAWING IS A GENERIC DRAWING FOR CANBERRA 3GIS LIGHT POLE STRUCTURES**



All Antennas are calculated at 20W per port and have electrical tilts of 10°




Scale: 1:100

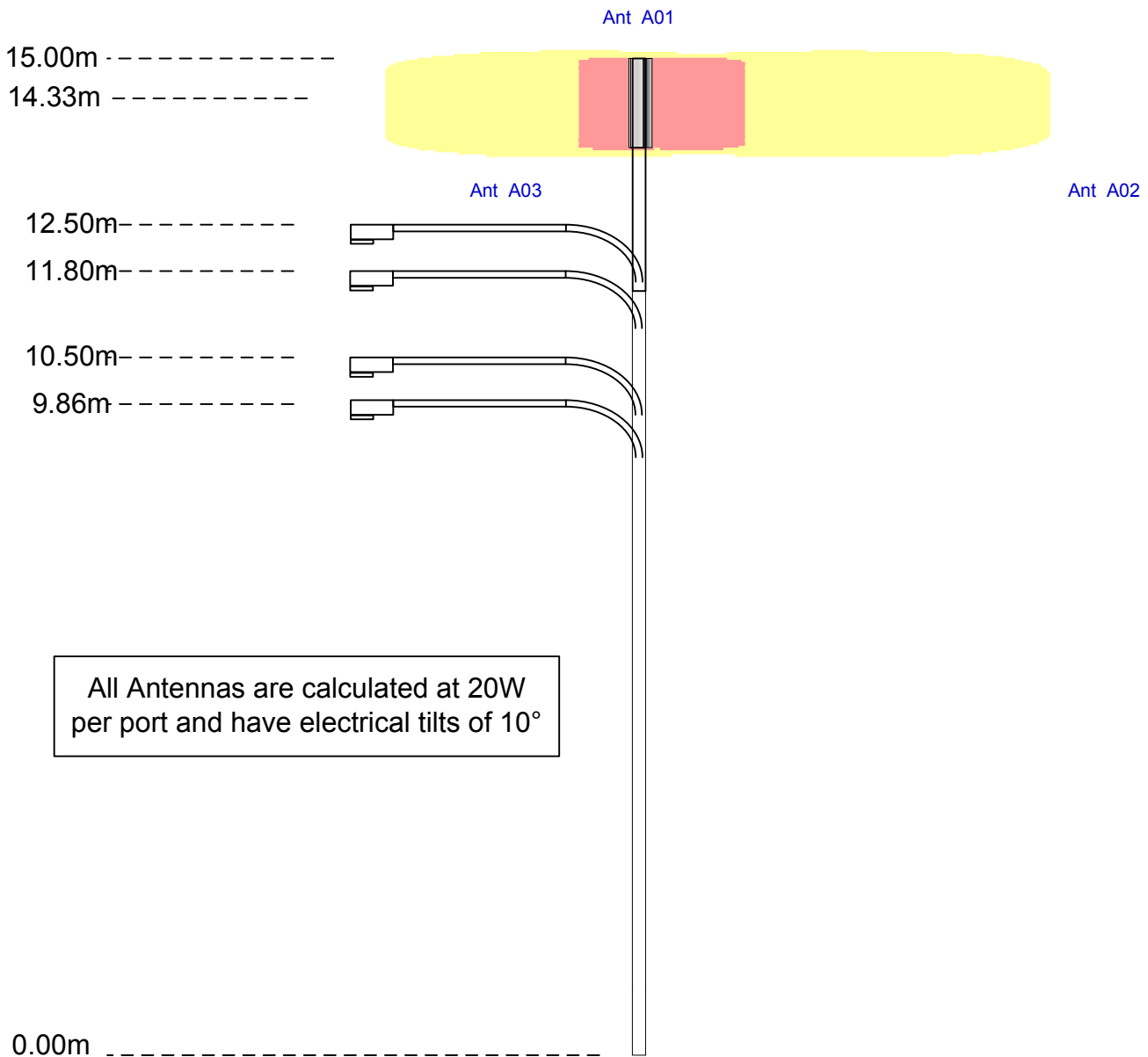


■ NO ACCESS

■ LIMITED ACCESS

Drawn	Accepted	Amendment	Date	Issue	CANBERRA 3GIS EME SURVEY
ZAAHEER KHALFAN	MARTIN CUTTER	PRELIMINARY EME FOR CANBERRA 3GIS LIGHTPOLE	25-Nov-05	1	
					S1 290° TN
					 Page 5 of 7

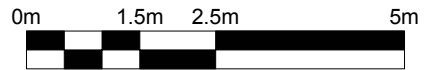
**THIS EME DRAWING IS A GENERIC DRAWING FOR CANBERRA 3GIS LIGHT POLE STRUCTURES**



Structure 1



Scale: 1:100



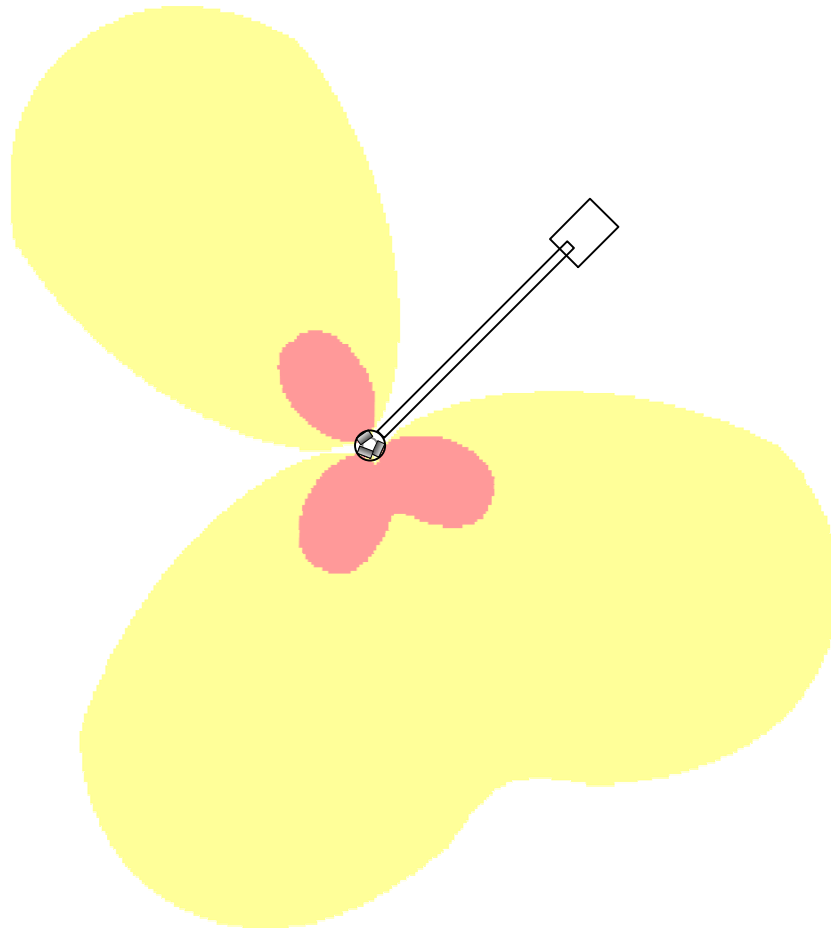
■ NO ACCESS

■ LIMITED ACCESS

Drawn	Accepted	Amendment	Date	Issue	
ZAAHEER KHALFAN	MARTIN CUTTER	PRELIMINARY EME FOR CANBERRA 3GIS LIGHTPOLE	25-Nov-05	1	CANBERRA 3GIS EME SURVEY
					S1 315° TN
					Page 6 of 7

THIS EME DRAWING IS A GENERIC DRAWING FOR CANBERRA 3GIS LIGHT POLE STRUCTURES

Ant A03



Ant A01

Ant A02

Structure 1

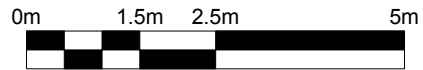
All Antennas are calculated at 20W per port and have electrical tilts of 10°



True North




Scale: 1:100



■ NO ACCESS

■ LIMITED ACCESS

Drawn	Accepted	Amendment	Date	Issue	CANBERRA 3GIS EME SURVEY
ZAAHEER KHALFAN	MARTIN CUTTER	PRELIMINARY EME FOR CANBERRA 3GIS LIGHTPOLE	25-Nov-05	1	
					S1 14.33m
					 Page 7 of 7