

STRUCTURE & ANTENNA DRAWING 3GIS CANBERRA EME SURVEY (PLAYING FIELD)

S1 110° TN

Page 2

S1 230° TN

Page 3

S1 350° TN

Page 4

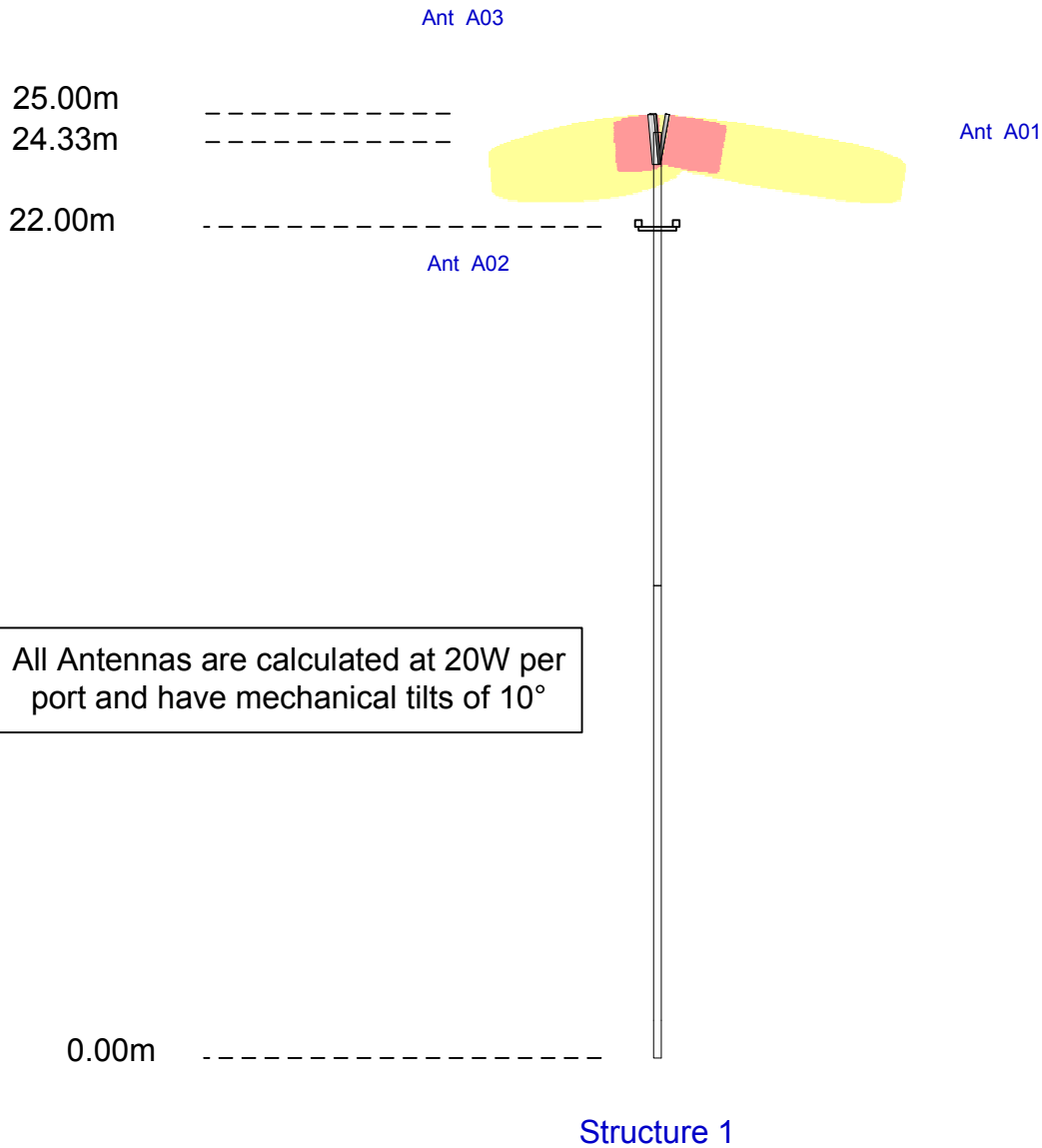
S1 24.33m

Page 5

This drawing uses the ARPANSA standard



THIS EME DRAWING IS A GENERIC DRAWING FOR CANBERRA 3GIS LIGHT POLE STRUCTURES



Scale: 1:200



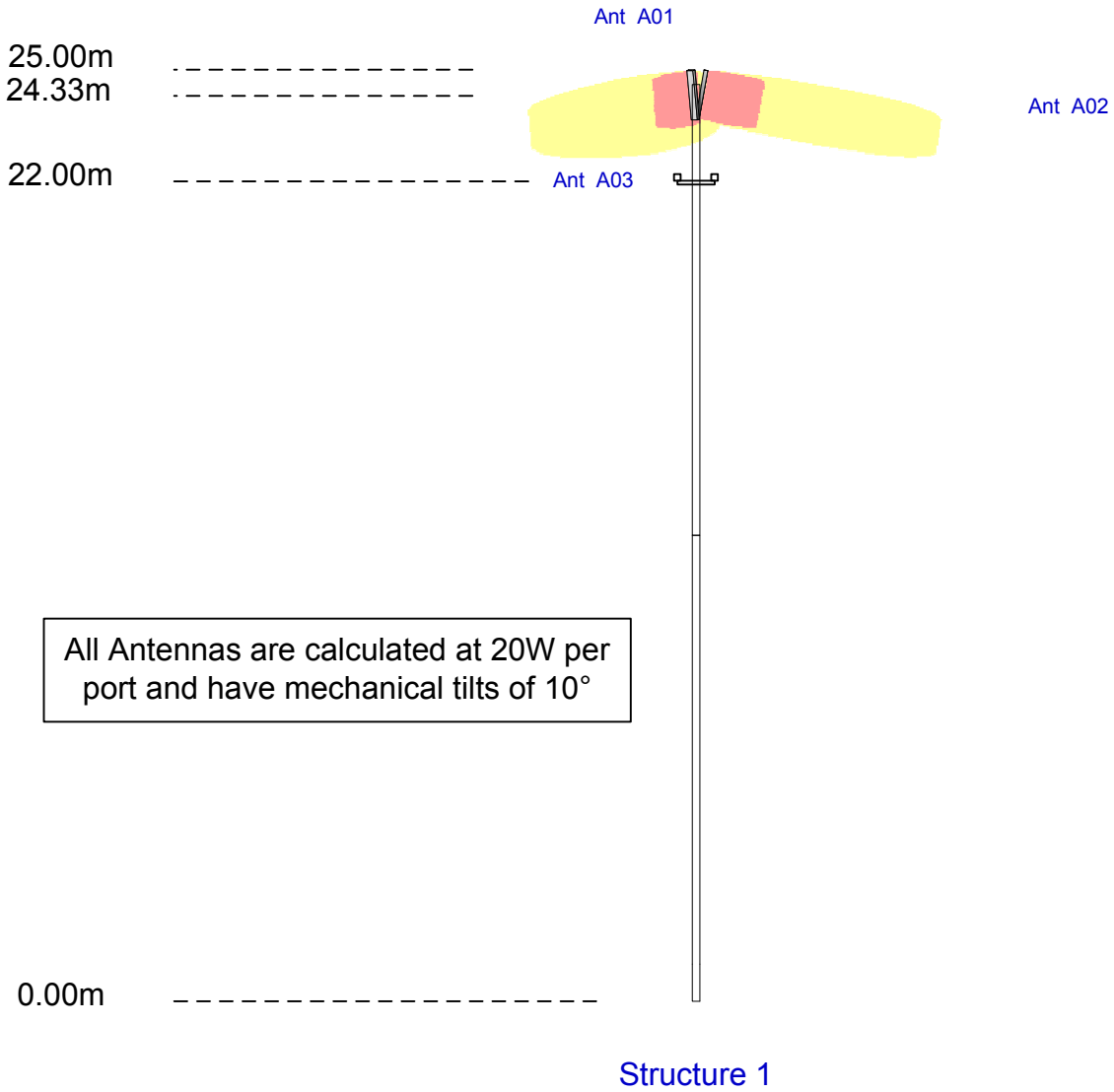
■ NO ACCESS

■ LIMITED ACCESS

Drawn	Accepted	Amendment	Date	Issue	
radPro	MARTIN CUTTER	PRELIMINARY EME FOR CANBERRA 3GIS LIGHTPOLE (PLAYING FIELD)	28-Nov-05	1	3GIS CANBERRA EME SURVEY (PLAYING FIELD)



THIS EME DRAWING IS A GENERIC DRAWING FOR CANBERRA 3GIS LIGHT POLE STRUCTURES



Scale: 1:200

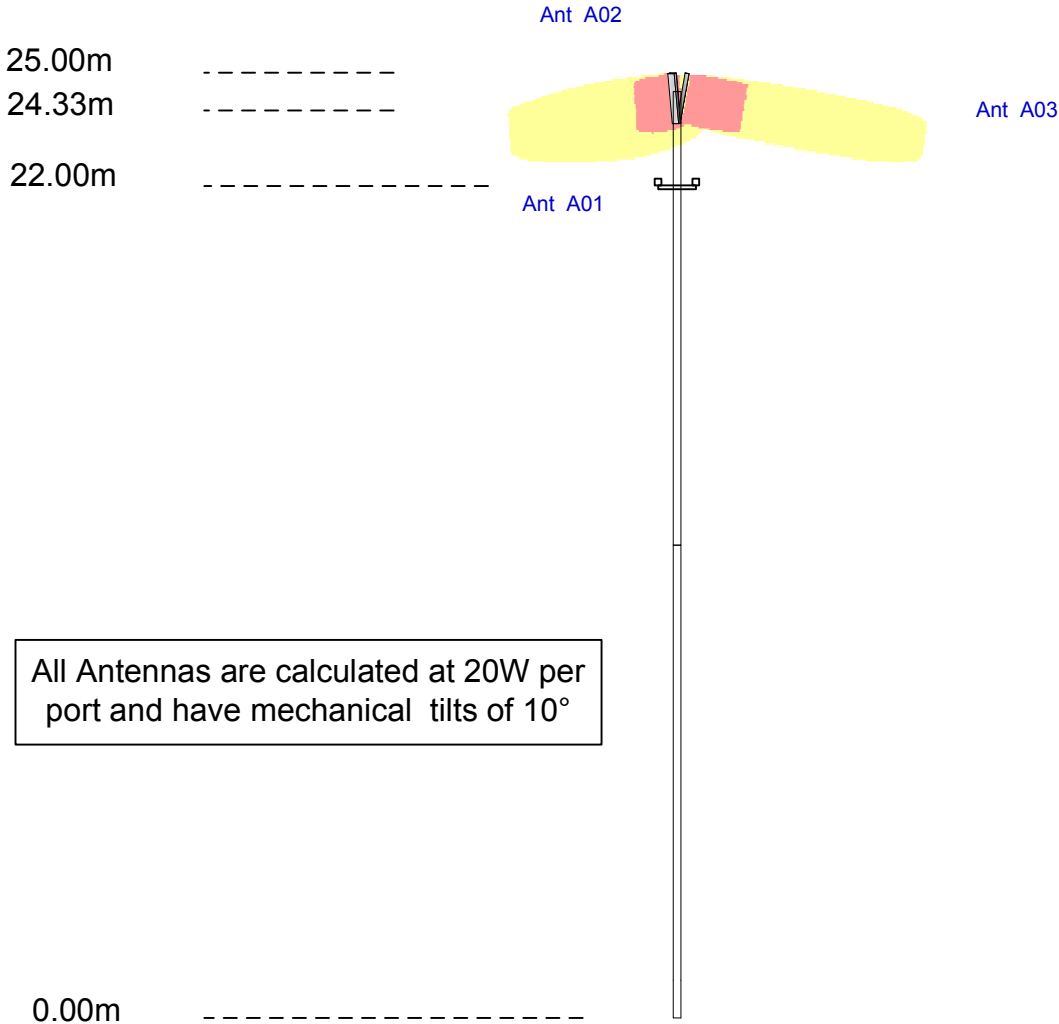


■ NO ACCESS

■ LIMITED ACCESS

Drawn	Accepted	Amendment	Date	Issue	
radPro	MARTIN CUTTER	PRELIMINARY EME FOR CANBERRA 3GIS LIGHTPOLE (PLAYING FIELD)	28-Nov-05	1	3GIS CANBERRA EME SURVEY (PLAYING FIELD)
					Page 3 of 5

THIS EME DRAWING IS A GENERIC DRAWING FOR CANBERRA 3GIS LIGHT POLE STRUCTURES



Structure 1



Scale: 1:200



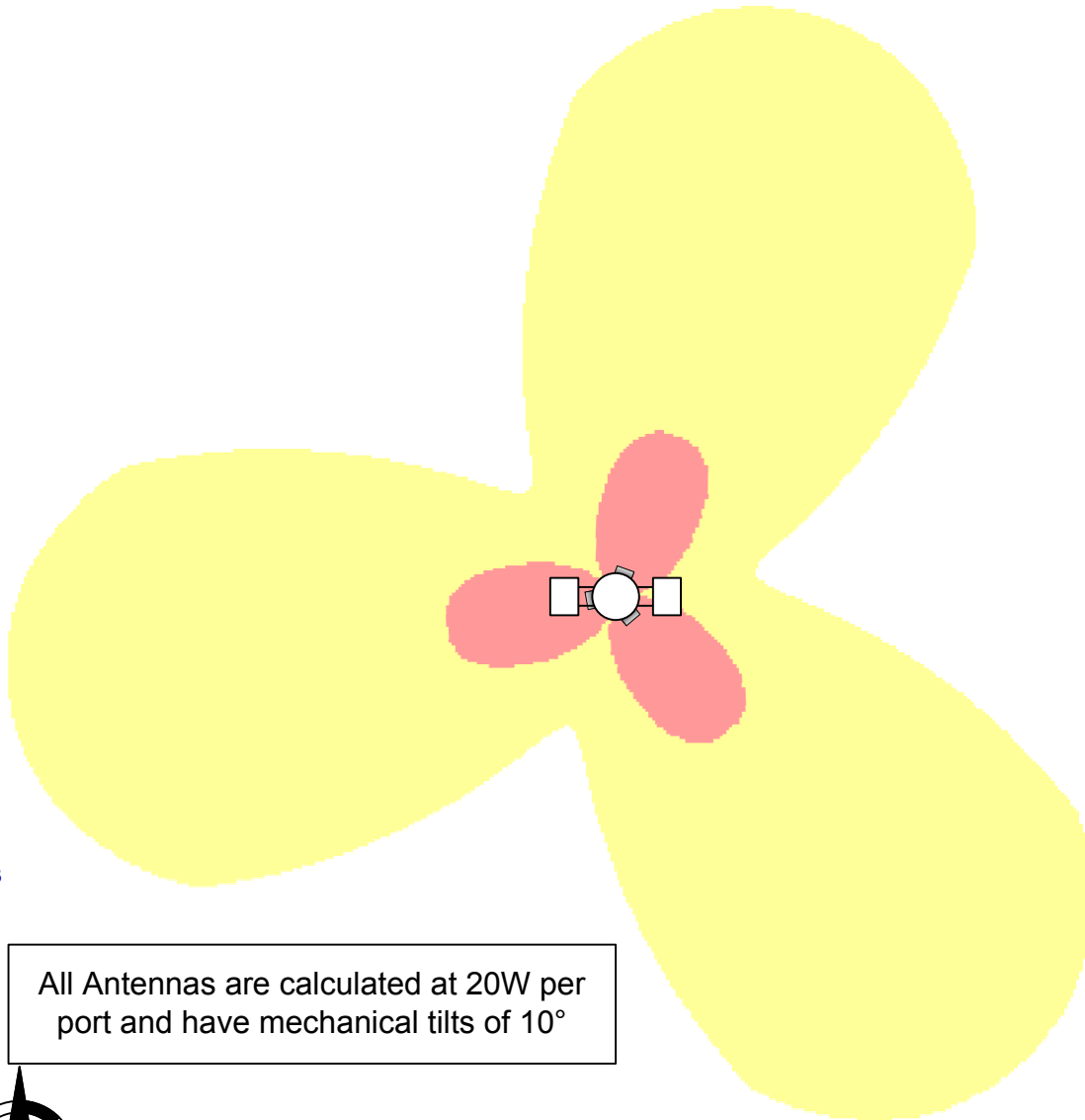
■ NO ACCESS

■ LIMITED ACCESS

Drawn	Accepted	Amendment	Date	Issue	
radPro	MARTIN CUTTER	PRELIMINARY EME FOR CANBERRA 3GIS LIGHTPOLE (PLAYING FIELD)	28-Nov-05	1	3GIS CANBERRA EME SURVEY (PLAYING FIELD)

THIS EME DRAWING IS A GENERIC DRAWING FOR CANBERRA 3GIS LIGHT POLE STRUCTURES

Ant A01



Ant A03

All Antennas are calculated at 20W per port and have mechanical tilts of 10°



True North

Structure 1

Ant A02



Scale: 1:80



■ NO ACCESS

■ LIMITED ACCESS

Drawn	Accepted	Amendment	Date	Issue	
radPro	MARTIN CUTTER	PRELIMINARY EME FOR CANBERRA 3GIS LIGHTPOLE (PLAYING FIELD)	28-Nov-05	1	3GIS CANBERRA EME SURVEY (PLAYING FIELD)
					