



handy THE CANBERRA SPATIAL PLAN guide

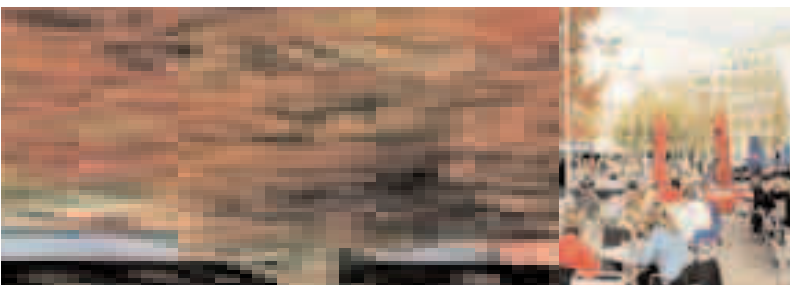
What the plan is for

The Canberra Spatial Plan is the key strategic planning document for directing and managing urban growth and change. It sets actions for 30 years and beyond to achieve this. *The Canberra Spatial Plan* outlines a strategic direction to achieve the social, environmental and economic sustainability of Canberra as part of *The Canberra Plan*.

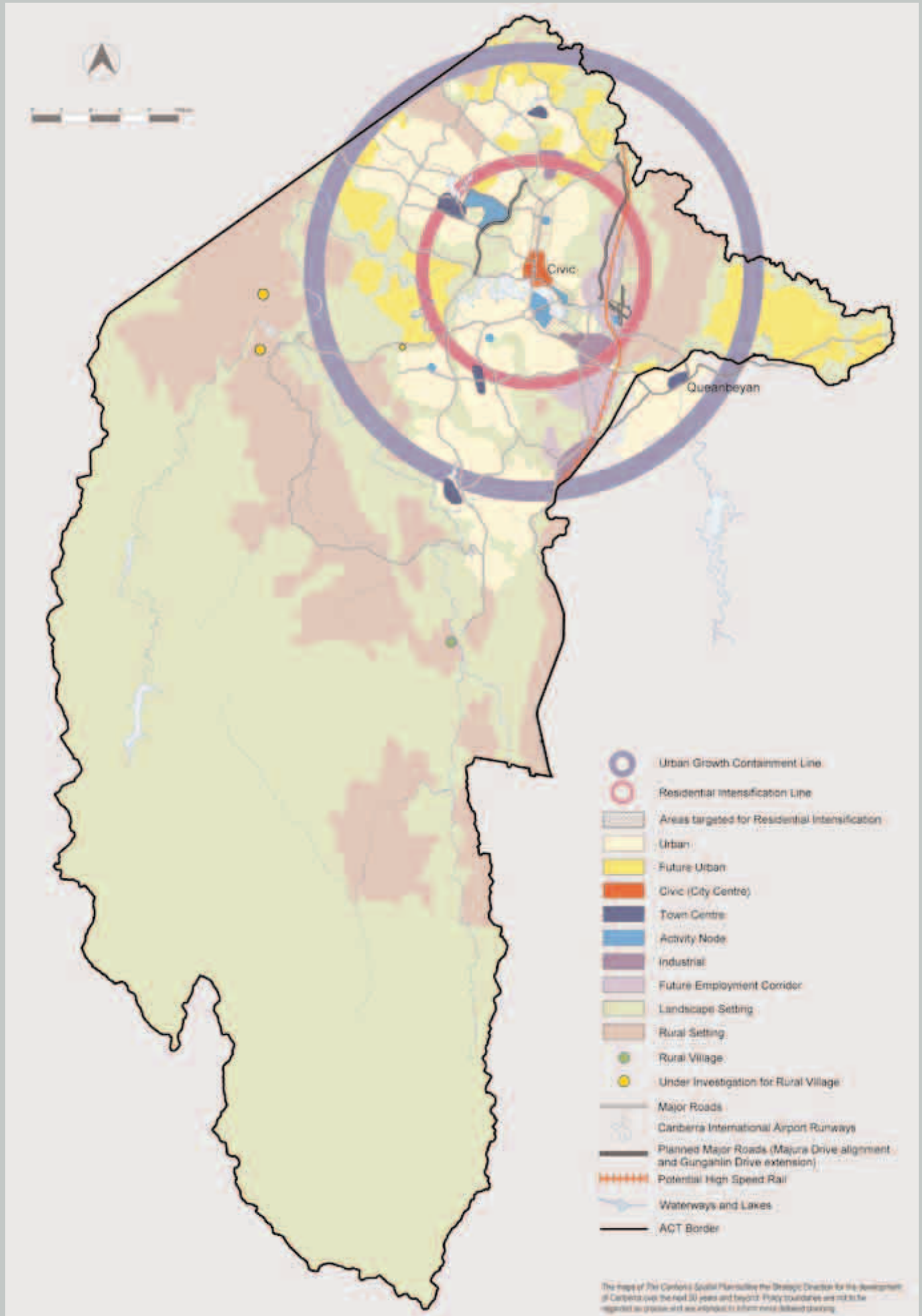
The plan's principles

The key principles underpinning *The Canberra Spatial Plan* are to:

- Contain growth within 15 kms of the city centre to reduce sprawl and protect biodiversity.
- Increase the number of homes within 7.5 kms of the city centre to provide a wider range of housing close to employment and services.
- Locate new residential areas close to town centres and transport routes.
- Locate employment close to residential areas and transport routes.
- Provide good travel connections to minimise journey times and trip length.
- Protect areas of high conservation value from the impact of development.
- Protect and enhance important assets.
- Be a responsible partner in the region.



MAP 1 The Canberra Spatial Plan - Strategic Direction



The plan's strategic direction

Key aspects of *The Canberra Spatial Plan* are:

- More housing in central areas, mostly in Civic, along Northbourne Avenue, Constitution Avenue, in Barton, Kingston and around town centres, while retaining the character and amenity of residential neighbourhoods.
- Growing communities in Gungahlin, development in Molonglo Valley in the short term, and if needed in Kowen Plateau later.
- Civic and the central area a focus for culture, business, ideas, people and important events.
- Jobs growth in Civic and town centres, with clustered activities along three employment corridors: Belconnen to Queanbeyan; Gungahlin to Tuggeranong; and Majura Valley to Jerrabomberra Valley.
- Wildlife corridors linked to each other and the region to allow wildlife movement.
- Transport links between town centres and Civic, and links from Molonglo Valley and Kowen Plateau to employment corridors, but through traffic directed away from the city centre.
- A bushfire abatement zone established and managed to protect the city from risk of major bushfire.
- Rural setting to frame the urban area and provide non-urban land for agricultural purposes.
- Landscape setting to create the green backdrop to the urban and rural areas.
- Water catchments protected from development that would adversely affect water quality.



How the plan will be implemented

The Canberra Spatial Plan will be implemented over the next 30 years through key interventions including land release, investment strategies and further investigations. Some immediate actions include land release, investment in infrastructure, Central Canberra Implementation Program, master plans for urban renewal sites, policy changes to the Territory Plan and the National Capital Plan and further investigations. *The Canberra Spatial Plan* contains indicators for measuring progress and developing new or revised strategies.

What the plan will achieve

The Canberra Spatial Plan will create a sustainable, compact city with the following features:

- a healthy community that is safe, active, provides choice in housing and ensures access to facilities.
- employment opportunities for prosperity, cultural vibrancy and business location choice.
- ease of movement to services and employment through a responsive transport system – including alternatives to private vehicles – and minimal travel times and distances between key locations.
- a unique sense of place indicated by its open space, its role as a national capital and cultural heritage.
- respect for the natural environment such as connecting nature reserves, minimising resource consumption, and maintaining water and air quality.
- fiscally responsible development shown by coordinated and cost-effective physical, social and cultural infrastructure and improved efficiency of urban infrastructure.



FOR MORE INFORMATION:

- phone 6207 5127
- or visit www.actpla.act.gov.au