

# Planning for EASTERN BROADACRE

The ACT Planning and Land Authority (ACTPLA) is starting long-term planning for the Eastern Broadacre area. Community input is invited on ideas for this area, particularly its role as a potential employment corridor.

Eastern Broadacre lies on the eastern edge of the ACT, extending from the Majura Valley in the north to Hume in the south and including Symonston and the Jerrabomberra Valley (see Figure 1).

It is close to the NSW border and contains key infrastructure including the Monaro Highway, the future Majura Parkway, the airport and the Sydney to Canberra railway.

The Canberra Spatial Plan, the ACT Government's key plan for the growth of Canberra over the next 30 years, identifies the area as a potential future employment corridor. However, it specifies that the suitability of the area for employment uses must be investigated first.

## Eastern Broadacre Planning Study

A public discussion paper has been prepared, based on the findings of the Eastern Broadacre Economic and Strategic Planning Direction Study (the 'study').

The study collected information about the area to inform planning. It indicates the area could provide opportunities for a range of industrial, transport and storage uses, together with tourism, recreation, conservation and continued broadacre land uses.

The study is available as background to the discussion paper. Some of its ideas have been updated and further refined in the discussion paper.

## Eight potential areas for future employment uses

The discussion paper identifies ten 'investigation areas' (see Figure 2). Eight have the potential for a range of employment uses. Two areas – A (Mount Majura) and D (Pialligo) – will remain under a broadacre zone at present, with Pialligo subject to the outcomes of a master plan for the area in 2011-12.

The eight potential employment areas are preliminary and subject to further planning, environmental and infrastructure investigations, government consideration and ongoing community consultation.

The paper also identifies areas for conservation, including potential future nature reserves in the Jerrabomberra and Majura valleys.

The future role, potential land uses and timing of possible land release varies across the investigation areas. Subject to further studies and community consultation, some areas may be developed in coming years. Others may not be considered until the medium to long term (2021-2036 and beyond).

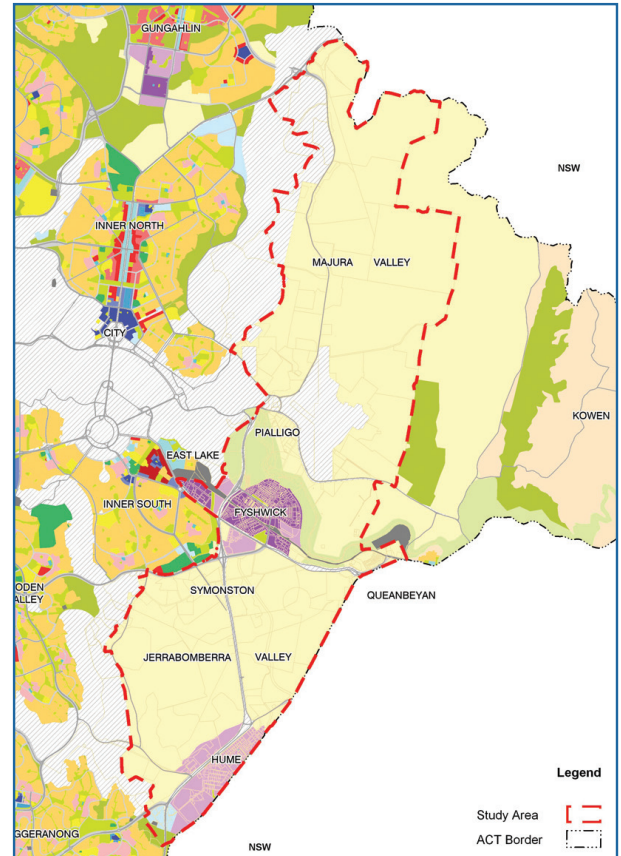


Figure 1 - Eastern Broadacre

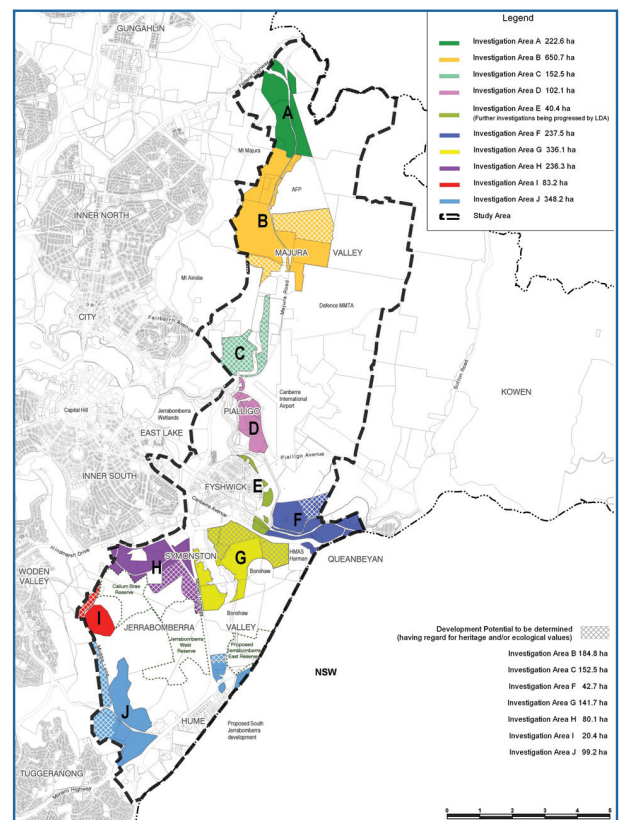
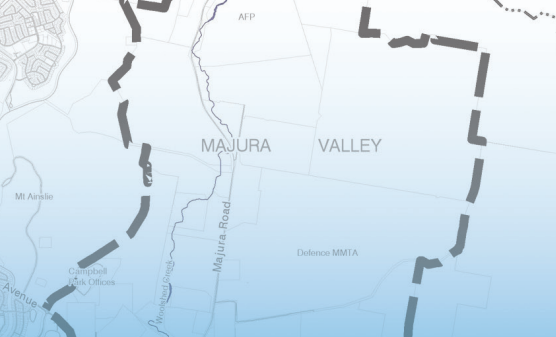


Figure 2 - Investigation Areas



# Planning for EASTERN BROADACRE



Figure 3 - Indicative project planning

## Community comment

ACTPLA is consulting with the community from an early stage in planning for Eastern Broadacre, including through a discussion paper, public displays and drop-in sessions.

The discussion paper addresses the rationale for and background to the study and its key findings. It discusses each of the investigation areas and the issues associated with their possible development as part of a future employment corridor.

## Have your say

You can have your say on the discussion paper by:

- completing an online survey at <http://www.actpla.act.gov.au/easternbroadacre>
- completing a hard copy feedback form, available at the drop-in sessions or from ACTPLA
- writing to us.

Deliver your comments by close of business on **Tuesday 30 November:**

- Hand deliver to the Customer Service Centre at 16 Challis St Dickson ACT between 8.30am and 4.30pm weekdays
- Email to [EasternBroadacre@act.gov.au](mailto:EasternBroadacre@act.gov.au)
- Post to: Eastern Broadacre Consultation, Planning Services Branch ACT Planning and Land Authority, GPO Box 1908, Canberra ACT 2601

## Information sessions

Information displays and drop-in information sessions will be held during the consultation period. Locations, dates and times will be posted on the ACTPLA website and advertised in local papers.

## For more information

For more information or copies of the discussion paper and study, go to:

- <http://www.actpla.act.gov.au/easternbroadacre> (Note that free internet access is available at all ACT public libraries)
- ACTPLA's Customer Service Centre, 16 Challis Street, Dickson
- ACT libraries (Dickson, Woden, Civic, and Tuggeranong) or
- Phone 6207 1923.

## Next steps

All comments will be considered. Following the consultation, a report will be prepared for government outlining the recommended next steps for planning the area. This may include further investigations into particular areas, followed by the preparation of draft amendments to planning controls.

Separate formal public consultation will occur on any proposed changes to planning controls. The ACTPLA website will be updated as planning progresses in the area.